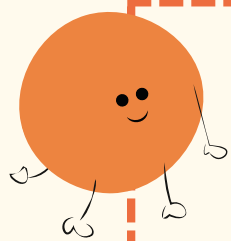
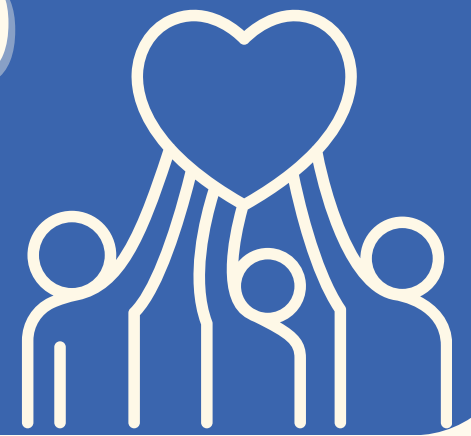


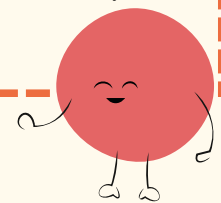
# COMMUNITY-OWNED ENTERPRISES

Empower your community with self-sustaining economic activities that prevent exploitation and over-expansion.



Community-Owned Enterprises are **local businesses owned and operated by residents**. They focus on meeting community needs while keeping wealth local.

From retail shops to renewable energy projects, these enterprises drive social, economic, and environmental renewal.



## FORMING AN ENTERPRISE

### A) Community Engagement

Initiate conversations with local residents to gauge interest in setting up a community-owned enterprise.

### B) Determine Objectives

Decide the focus of the enterprise—community centers, retail outlets, or services employing local residents with flexible work needs.

### C) Connect with Resources

Partner with Roving Labs to link with local business mentors and supportive Social Service Agencies for essential guidance and co-design.

## WHO'S INVOLVED IN THIS ENTERPRISE?

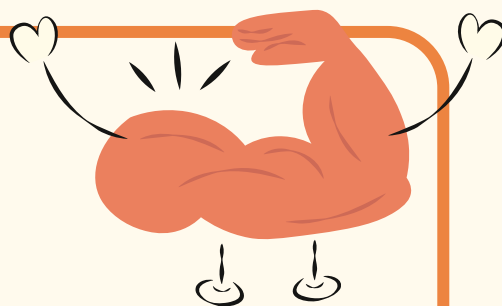


### Facilitator

- Facilitators are the head of the group.
- Manage the enterprise.
- Ensure alignment with community goals.
- Operate efficiently to maximise benefits for local residents.

### Participants

- Participants are the muscles of the group.
- Contribute ideas and investment.
- Participate in decision-making.
- Directly influence how the enterprise serves the local area.



Join our  
Information Session!

